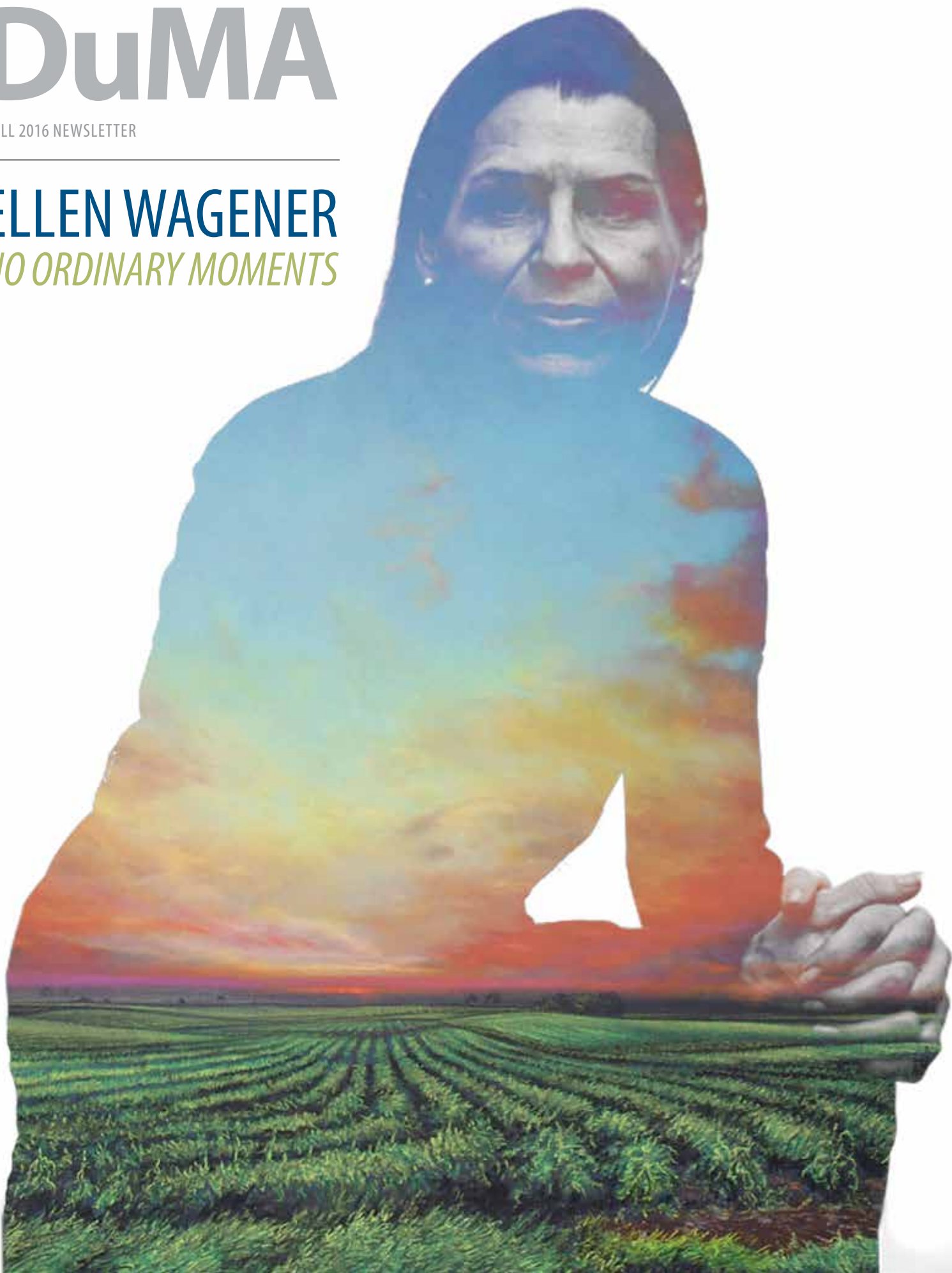


# DuMA

FALL 2016 NEWSLETTER

---

## ELLEN WAGENER *NO ORDINARY MOMENTS*





DEVELOPMENT



Second Saturday: Bell Tower Theater

The Dubuque Museum of Art is governed by a board of volunteer members.

### BOARD OF TRUSTEES 2016 Officers

Jeanne Quann, President  
Christine Schiesl, Past-President  
Tom Peckosh, Vice-President  
Dr. Tom Benda, Secretary  
Chris Even, Treasurer

### Members

Tim Conlon  
Dr. Paul DeLong  
Russell Knight  
Dr. Randy Lengeling  
Tim Newlin  
Edwin Ritts Jr.  
Heather Cairns Runde  
Julie Steffen  
Tonya Trumm  
Christopher Wand  
Jack Wertzberger  
Robert Wethal

### STAFF

Amethyst Barron, Membership and Visitor Services Associate  
Margaret Buhr, Director of Education  
Jean Hoeger, Finance Manager  
Becca Krapfl, Marketing & Events Coordinator  
Stacy Peterson, Associate Curator and Registrar  
David Schmitz, Executive Director  
Erik Steffenson, Maintenance Specialist



## FROM THE DIRECTOR

Since March, the museum's Board of Trustees, staff and volunteers have been engaged in a process of learning and reflecting on our goals and priorities for the future. Throughout this process, we have reached out to many in our community to solicit their ideas and input—a process that will continue over the months and years ahead. I invite you to review our updated strategic goals, available at [dbqart.com/mission](http://dbqart.com/mission), and to help shape our new direction and initiatives.

This fall also brings many new exhibitions and programs, with an emphasis on collaboration. Innovative for its scale and intensity, Ellen Wagener's compelling body of art draws on familiar imagery and themes while speaking to our deep relationship to the land. During a short residency in Dubuque, Ellen will visit with numerous area schools and learning centers.

We are also excited to present many new and continuing events, ranging from First Fridays and Second Saturdays to our second Movie

at the Museum. Running through all of these efforts are unique community partnerships, including with Clarke University, the Dubuque Camera Club, Dubuque Main Street, Heritage Works, Loras College and the Bluff Strokes Plein Air Paint Out, among others.

Finally, 2016 also marks the 125<sup>th</sup> birthday of Iowa's most famous artist, Grant Wood. To celebrate the occasion, we commissioned a number of contemporary Iowa artists, each inspired by Wood's ideas, to create and share an original work (see page 8). On a related note, Wood's iconic *Appraisal*—on long-term loan to DuMA from the Carnegie-Stout Public Library—will travel to the Brandywine River Museum of Art in Pennsylvania this fall, followed by the High Museum of Art in Atlanta, Georgia next spring, for a major survey of American Regionalist art, testifying to the enduring appeal of Wood's art.

See you at the museum and in the community.

David

## SMITHSONIAN IN YOUR NEIGHBORHOOD



Through its affiliation with the Smithsonian Institution, the Dubuque Museum of Art continues to seek and find creative ways to bring the resources of our nation's museum to our community.

This fall, we will partner with the Bluff Strokes Plein Air Paint Out, a weeklong outdoor painting competition held at various locations throughout

Dubuque, October 9-15. During a live videoconference with a Smithsonian American Art Museum curator, participating artists will have the opportunity to ask and learn about the history of plein air painting.

Have an idea for how to bring the Smithsonian into your neighborhood or classroom? Contact David Schmitz, Executive Director, at [563-557-1851](tel:563-557-1851).

# \$28K

## A STARRY NIGHT

Held on June 15<sup>th</sup>, 2016 at Mount Caramel, A Starry Night increased awareness around mental health and raised more than \$28,000 in support of museum outreach programs. Thank you to all who attended and gave to this important and urgent cause.



## MEMBER SPOTLIGHT: ROBERT & MARY ARMSTRONG

### Why did you become a member?

We both appreciate the spark and creativity of artists. Robert is an actor and I do some metal work and we try to be involved with the arts in any way we can. When we moved to Dubuque in 2012, we found a wonderful and very active arts community. Prior to coming here, I worked for a regional arts center in Texarkana, Texas and Robert has worked with several local theater companies. We know how important it is to support arts organizations, so supporting the museum with our membership just seemed like the right thing to do.

### What is your favorite part about being a member?

We like receiving information about new exhibits and events. We enjoy coming to openings, seeing friends and making new friends. We did not know anyone when we moved to Dubuque, and art related events offered us an easy way to meet people and feel that we were involved in the community.

## SAVE THE DATE: ANNUAL GALA, AUCTION AND RAFFLE

**Friday, November 11, 6 pm**  
**Hotel Julien Dubuque**

This year's event will be based on the theme "Haute Hong Kong." Enjoy a live and silent auction, featuring works of art by some of our most talented regional artists, creative experiences and artful travel and dining packages.

**Honorary Co-Chairs: Tim and Heather Runde**

**Platinum Sponsor: Runde Auto Group**



## LEAVE A LEGACY

A legacy is defined by what we help make possible during and beyond our own lifetime. Planned giving can be an essential part of creating this legacy and helps to sustain our organization into the future. After your loved ones have been remembered, please consider including the Dubuque Museum of Art in your long-range financial plans.

For more information about the options and opportunities available through our planned giving program, please contact David Schmitz, Executive Director, at [563-557-1851](tel:563-557-1851).

If you have already included the Dubuque Museum of Art in your estate plans, please let us know so that you may be properly recognized and thanked.



## MEMBERSHIP

Thank you to all of the new and renewing members who contributed their support during our summer membership drive. More than 49 members joined, renewed or upgraded their membership between June and August.

Mr. James Welu • Richard and James Kinny Giglio • Paul and Judy Brandt • Mr. and Mrs. Steve Chapman • Wayne Coursey • Frank and Ann Duchow • Emily Duehr • Patrice M. Lachecki • Mr. and Mrs. James Lindsay • Mr. and Mrs. Nick Lucy • Paula Maloy, SVM • Mr. and Mrs. Jim Roth • Catherine Stierman • Gene and Jane Tully • Ms. Betty Hillary • Judith Wand • Bruce Clark • Jim and Jane O'Neill • Kathryn Bernardi • Jack and Lynn McCullough • Ed and Ruth Gansemer • Karen Kascel • Mary Ellyn Jensen • Marilyn Bustle • Dave and Courtney Myers • Lucille Nicholson • Lisa and Jeffrey Ruppel • Jim and Rose Marie Ryan • Shirley White • Bob and Betsy Badger • Mr. and Mrs. Chad Chandlee • Thomas B. and Barbara H. French • Charlie and Vicki Glab • Mary Green and Larry Davig • Joe and Anne Hanson • Joyce Hartig • Dr. and Mrs. Craig Herther • Dennis and Carol Powers • Heather Cairns Runde • Tonya Trumm • Kathleen Weber • Mr. and Mrs. Dick Heller • Marlys Dunphy • Sister Antonetta Martinka • John and Ann Berg • Tim and Mary Althaus • Colleen Walters • Olivia Erschen and Steve Starkey

## MEMORIAL GIFTS

The following donors made a gift in memory of Heather Norman, who passed away in June 2016. Heather served as DuMA's exhibitions manager from 2001-2003.

Judith Holt • Ronald and Virginia Hoefler • Charlott Ulve • Connie Meester • Dona and Douglas Schlesier • Sarah and Michael O'Connell • Paul and Myra Delong • Brendan and Jeanne Quann • Jim and Diane Sass • First Community Trust • Kathryn Norman • Jeanne Kramer • Mark and Cheryl Falb • Nicholas and Carrie Schrup • Stephanie Holscher Bear • Adeline Gard • Dr. Paul Pechou

**NEW ACQUISITION: BILL FARRELL, HE SAYS, SHE SAYS, ca. 1981**

A significant work by world-renowned ceramic artist Bill Farrell of Galena, Illinois is one of the newest works to become part of the Dubuque Museum of Art's collection. The work had been on loan to the museum prior to the artist announcing the generous donation. The work is a stunning example from Farrell's He Says, She Says series, a series that began in 1968 and spanned almost 30 years. In this series, he explored the ebb and flow of relationships—how two people interact, communicate, and respond with each other and how this can fluctuate over time.



Bill Farrell has helped shape contemporary American ceramics as part of the second generation of influential ceramicists lifting the medium to the same level of critical thinking as painting and sculpture. Farrell was Professor and Head of the Ceramics Department at the School

(Continued on page 6)



**DUBUQUE ARCHITECTURE FROM A NEW PERSPECTIVE**

**PHOTOGRAPHY BY THE DUBUQUE CAMERA CLUB  
AUGUST 5 - SEPTEMBER 25, 2016**

The Dubuque Museum of Art is proud to host the 4th annual exhibition of photographs by members of the Dubuque Camera Club. The theme of this year's exhibition focuses on Dubuque's iconic architecture, from the historic, modern, and new to the neglected or restored. The challenge for club members was to bring a fresh awareness and appreciation to this well-documented subject.

DuMA is excited to continue its partnership with this local group dedicated to promoting a greater appreciation for the art and skill of photography. Those who work in creative fields often work in isolation out of necessity and preference but when they have the occasion to participate in a group, or collaborate with another artist, the exposure can bring new ideas and directions to their work. In a group like the Dubuque Camera Club where any skill level is welcome and the medium of photography is widely accessible, the motivated beginner can get started quickly and find an invaluable source of knowledge and support.



**ON THE STREET, OFF THE ROAD**

**PHOTOGRAPHY BY RON TESTA AND PETER ROBERT THOMPSON  
AUGUST 19 - NOVEMBER 6, 2016**

**SPONSORED BY COTTINGHAM & BUTLER**

Two Midwest photographers come together to present over four decades worth of travel and explorations from behind the camera. This unique look at the world from their perspectives is an inspiring journey. Ron Testa is a photographer from Wilmette, Illinois who combines a sense of compassion with the keen eye of a street photographer. He received a B.F.A. from the Cleveland Institute of Art and an M.F.A. from the Visual Studies Workshop in Rochester, New York. He served three tours of duty in Vietnam as a combat photographer and from 1975 to 1989 was Head Photographer for the Field Museum in Chicago. He recently retired from a career as a crime scene photographer.

Peter Robert Thompson is a photographer and instructor from Mineral Point, Wisconsin whose photographs of the western U.S. celebrate the poetry and simplicity of the vast, stark landscapes he explores. Thompson studied with Al Weber, Oliver Gagliani, Richard Burton, Walter Chappell, and Ansel Adams. His work has been exhibited nationally and internationally and is part of the collections of the Polaroid Corporation and the George Eastman House. Thompson regularly leads photography workshops locally and regionally.



**PAINTINGS BY ZANE YORK**

**NOVEMBER 18, 2016 - FEBRUARY 5, 2017**

**SPONSORED BY COTTINGHAM & BUTLER**

With an entomological fascination, Brooklyn-based painter, Zane York, creates magical floral paintings that aren't actual flowers but insects convincingly arranged as kaleidoscope bouquets and single stemmed still-lives. Exquisite detail and flawless surfaces define York's style. His enigmatic oil paintings are a true pleasure and wonder to behold.

Zane York was born in Fremont, Nebraska in 1978 and grew up in Dubuque, Iowa. He received his B.F.A. in drawing, painting, and sculpture from the University of Wisconsin-Oshkosh and received an M.F.A. from the New York Academy of Art. He has shown at Causey Contemporary in Brooklyn as well as Ripon College in Wisconsin, Austin Artworks Center in Minnesota, Eden Rock Gallery in St. Barth's, The Fontbonne University Gallery in St. Louis, Studio 7 Gallery in New Jersey and in exhibitions at The New York Academy of Art. His work has earned numerous awards, from institutions such as the Posey Foundation, the Milton J. Memorial, The Prince of Wales Scholarship, among others.



**DIALOG HUMAN**

**THE DRAWINGS OF PRISCILLA STEELE AND THOMAS C. JACKSON**

**NOVEMBER 19, 2016 - FEBRUARY 5, 2017**

Priscilla Steele and Thomas Jackson have been part of a life drawing group that meets twice a week since 2008. These sessions have led to vast bodies of work that are united in their source but disparate in their sensibilities. The differences between them heighten an awareness of the qualities in both bodies of work, triggering a visual dialog. Steele was raised in New Jersey. She received her B.A. from St Lawrence University in Canton, New York and M.A. and M.F.A. in Printmaking from the University of Iowa. She has been active in shaping the art community in the Cedar Rapids area, serving on numerous committees and teaching at Coe College for 18 years. Since 1991, she and her husband have owned and operated Campbell Steele Gallery in Marion, Iowa where she also maintains an active studio practice.

Jackson was born in Rock Island, Illinois. He received his B.A. from Western Illinois University and M.F.A. from the University of Notre Dame. He taught art at Mount Mercy University in Cedar Rapids before pursuing a distinguished career in advertising and marketing. Since retiring in 2000, he has achieved a second successful career as an artist.

(Continued from page 5)

of the Art Institute of Chicago from 1968-2001. Prior to the Art Institute, Farrell taught public school, studied and taught at Penn State University, and attended Alfred University. After exhibiting in many regional and national exhibitions in the 1960s and 1970s, Farrell received the National Endowment for the Arts First Award in Ceramics in 1982. Since 1990, he has travelled the world - Portugal, Denmark, the Netherlands, Belgium, Italy, and Taiwan - making art, building kilns, lecturing, and teaching. In 1997, he moved to Galena with partner and fellow artist/professor Delores Fortuna where they built their home and a studio with two kilns - one for him and one for her.

**THE ARTHUR GEISERT COLLECTION**



Since 2004, DuMA has been the repository of the complete collection of etchings and books by award-winning children's illustrator and New Yorker cartoonist, Arthur Geisert. In this inaugural exhibition of the new Arthur Geisert area at DuMA, learn about the process of etching. Special thanks for curatorial assistance from Louise Kames, printmaker and Professor of Art at Clarke University.

Image above:

Images from left to right:

Rick Noel, *Saluting Dubuque*, 2016, digital photograph on steel, 18x12 in., collection of the artist

Ron Testa, *Iron Horse*, Alexandria, Virginia, 2010, digital photograph on paper, 14x14 in., collection of the artist

Peter Robert Thompson, *Untitled*, 2016, digital photograph on paper, 8x12 in., collection of the artist

Zane York, *Clothes Moth Daisy*, 2014, oil on paper, 8 3/4 x 6 1/4 in., collection of the artist

Priscilla Steele, *Reclining Amanda*, 2016, charcoal on paper, 22x30 in., collection of the artist

Thomas C. Jackson, *Woman*, 2016, brush and ink on paper, 15x22 in., collection of the artist

**RELATED EVENTS**



**Member Exhibition Opening**  
August 12

**Slow-Down Sunday Brunch**  
August 14

**Gallery Talk**  
August 14

**Also on view:**  
**Ellen Wagener: *Beyond the Horizon***

August 15 - September 25, 2016  
Clarke University - Quigley Gallery  
Reception: Friday, September 16  
5 - 7 pm

**Visiting Artist in Residence**

Ellen will return in October to visit numerous area schools and to speak about her work and career as an artist. Sponsored in part through a grant from the Iowa Arts Council.

Cover Image: Ellen Wagener, *Four Seasons* (detail of Spring), 2015, pastel on paper, 60x40 in., collection of the artist

Image to the right: Ellen Wagener, *Waiting for the Pink Floyd Moment* (#4), 2015, pastel on paper, 15x15 in., collection of the artist



**ELLEN WAGENER:  
NO ORDINARY  
MOMENTS**

**AUGUST 13 – NOVEMBER 6, 2016**

**SPONSORED BY THE IOWA  
ARTS COUNCIL, JOHN DEERE  
FOUNDATION, AND KLAUER  
FAMILY**

A native of DeWitt, Iowa, pastel artist Ellen Wagener has resided in Arizona for 15 years but always retained a fascination with her native landscape. As Wagener explains, “everyone thinks of Iowa and most of the Midwest as ‘fly-over states’ that change very little and look relatively the same, constantly. I see it quite differently.” To capture the landscape that she knows, Wagener draws inspiration from 19th century French Impressionist, Claude Monet, and early 20<sup>th</sup> century American artist, Georgia O’Keefe, returning repeatedly to the same locations over long periods to record daily and seasonal changes of light, color, and texture. From her repeated visits and observations Wagener has created monumental groupings of pastel paintings in multiple series depicting rivers, sunsets, cultivated fields, and spectacular weather events as well as her newest series of prairie fires.

Wagener attended the University of Iowa and received her B.F.A. from the Corcoran School of Art in Washington, D.C. Her work has been recognized and exhibited nationally and is in numerous private and public collections including the Dubuque Museum of Art, the Tucson Museum of Art, the Cedar Rapids Museum of Art, Iowa State University, the University of Iowa Museum of Art, the Figge Art Museum, and the U.S. 9<sup>th</sup> District Federal Courthouse in Cedar Rapids.

**IOWA ARTS COUNCIL**  
IOWA DEPARTMENT OF CULTURAL AFFAIRS



Images at left, top to bottom:

Ellen Wagener, *Twelve Sunsets in the Life of Henry A. Wallace* (January- April and November), 2014, pastel on paper, 30x32 in. ea., collection of the artist



EDUCATIONAL PROGRAMS

### SUMMER UPDATE

2016 set a record for summer art camp participation, with more than 60 students taking part in week-long camps for grades 1-2, 3-5, and 6-12. Ms. Amy Gruhn-Farnum, visual arts instructor at Eisenhower Elementary School, taught the camps. Through the generosity of donors to the Rose Buhr Scholarship Fund, nearly a third of students received need-based scholarships.

Through a partnership with St. Mark Youth Enrichment's Heroes Academy program, DuMA hosted more than a dozen students, entering grades K-3, this summer. Over the course of 7 weeks, students and teachers worked on a variety of projects aimed at integrating health, wellness, reading and the arts.



DuMA has begun a pilot program that serves seniors with early-stage dementia and their caregivers. Called 'In the Mind's Eye', this monthly respite program is held in the galleries and led by trained museum staff and docents, who utilize works of art and hands-on activities to stimulate conversation among participants with memory loss and their loved ones. This initiative is made possible in part by a grant from the Wahlert Foundation.

## SECOND SATURDAYS

Second Saturdays features culturally-diverse performing arts acts and hands-on art activities that the entire family will enjoy.

**September 9:** Scavenger Hunt

**October 8:** Amy Ressler, Storyteller

**December 10:** Holiday program by Heartland Marimba

Second Saturdays are supported by Mediacom.



## YOUNG @ ART

Every second and fourth Tuesday, toddlers ages 3 – 5, accompanied by a parent or grandparent, and are invited to the Museum to have a merry time creating art. Please come dressed to get messy!

All supplies are furnished. Please call Margaret Buhr at **563-557-1851** for more information or to enroll.

## MAGIC FOR THE MUSEUM 2

**Benefitting the Dubuque Museum of Art**  
**Saturday, October 22, 2016, 7 pm**  
**Grand Opera House**

\$15.00 General Admission Ticket  
\$20.00 VIP Ticket\*

\*Includes pre-show magic lesson from 6 - 6:30 pm. Come early and take magic with you!

For tickets contact, the Grand Opera House Box Office at **563-588-1305**.



## ART TALKS

Jim Welu, Loras College alumnus and director emeritus of the Worcester Art Museum, will present two talks in September:



**Vermeer's Mania for Maps**  
**Sunday, October 9, 1:30 pm**  
**Dubuque Museum of Art**

17<sup>th</sup>-century Dutch artist Johannes (Jan) Vermeer's detailed depictions of maps and globes coincide with the great age of exploration and mapmaking. These cartographic objects, and the ways in which Vermeer used them, not only add further meaning to the allegorical subjects and scenes of everyday life in Vermeer's paintings; they also shed light on the artist's working methods, including his possible use of the camera obscura.

**The Monuments Men: Heroes at Home and Away**  
**Monday, October 10, 7 pm**  
**Loras College Alumni Campus Center Ballroom**  
**Located at the corner of Loras Blvd. and Cox St**

Inspired by a book of the same title, the Monuments Men were the subject and title of a recent Hollywood movie, starring George Clooney. During World War II, a group of museum directors, curators, artists and architects, led by Iowa-born George Stout, helped to protect masterpieces from the Nazis, who stole thousands of works of art from museums, churches and private collectors.

Sponsored in part by a grant from Humanities Iowa.



## FAMOUS DEAD ARTIST SERIES

**Sunday, December 4 at 1:30 pm**  
Gwen Beatty will portray Mexican painter Frida Kahlo.

## GRANT WOOD 125<sup>TH</sup> ANNIVERSARY

### GRANT WOOD ANNIVERSARY COMMISSIONS

**Mary Swander**, Iowa's former Poet Laureate and Distinguished Professor of English at Iowa State University, will write a poetic performance piece centered around Grant Wood's painting *Appraisal*. Based on research and interviews, this one-person show will explore the development and change in the poultry industry from the 1930s through the present.

Swander's play will premiere at the museum on September 25 at 1:30 pm with a talk by Dr. Randy Lengeling who will speak about the Regionalist connections between Ellen Wagener's and Grant Wood's work.

Supported in part by a grant from Silos & Smokestacks.



**Reinaldo Correa-Diaz**, lecturer in the Department of Architecture at Iowa State University, created a sculptural portrait based on Wood's only painted self-portrait in the collection of the Figge Art Museum in Davenport. Correa-Diaz's sculpture is produced from a cast acrylic form and has a mirrored finish on one side, allowing the viewer different perspectives on Wood's iconic portrait.

Supported in part by Selser Schaefer Architecture, Dr. Randall Lengeling and Ed and Susie Ritts, Jr.



Through a collaboration with **Dubuque Symphony Orchestra** conductor and artistic director **William Intriligator**, DuMA plans to host an educational series in Fall 2016 based on American composers, including Aaron Copland, who have taken up Wood's call for a Regionalist vision in the arts.

Wednesday, August 31, 12:15 pm  
Wednesday, September 7, 12:15 pm

Image, right:

Grant Wood (America 1891 - 1942), *Appraisal* (detail), 1931, oil on composition board, 37x43 in., on long-term loan from the Carnegie-Stout Public Library, acquired through the Lull Art Fund, LTL.99.08





CALENDAR OF EVENTS

S	M	T	W	TH	F	S
				1	2	3
4	5	6	7	8	9	10
11	12	13	14	15	16	17
18	19	20	21	22	23	24
25	26	27	28	29	30	

## SEPTEMBER

- **FIRST FRIDAYS**  
Friday, September 2, 5 pm
- **IN THE MIND'S EYE**  
Saturday, September 3, 10 am
- **LUNCH & LEARN**  
Wednesday, September 7, 12:15 pm
- **SECOND SATURDAYS**  
Saturday, September 10, 1 pm
- **BABY & ME TOURS**  
Tuesday, September 13 & 27, 9 am
- **YOUNG AT ART**  
Tuesday, September 13, 2 pm
- **ELLEN WAGENER: BEYOND THE HORIZON**  
Friday, September 16, 5 pm  
Clarke University, Quigley Gallery
- **MARY SWANDER'S PERFORMANCE WITH TALK BY DR. RANDY LENGELING**  
Sunday, September 25, 1:30 pm



S	M	T	W	TH	F	S
						1
2	3	4	5	6	7	8
9	10	11	12	13	14	15
16	17	18	19	20	21	22
23	24	25	26	27	28	29
30	31					

## OCTOBER

- **FIRST FRIDAYS**  
Friday, October 7, 5 pm - 8 pm
- **IN THE MIND'S EYE**  
Saturday, October 8, 10 am
- **SECOND SATURDAYS**  
Saturday, October 8, 1 pm
- **ART TALK: VERMEER'S MANIA FOR MAPS**  
Sunday, October 9, 1:30 pm
- **BLUFF STROKES PLEIN AIR PAINT OUT**  
Sunday, October 9 - 15, various times & locations
- **ART TALK: THE MONUMENTS MEN: HEROES AT HOME AND AWAY**  
Monday, October 10, 7 pm  
Loras College
- **BABY & ME TOURS**  
Tuesday, October 11 & 25, 9 am
- **YOUNG AT ART**  
Tuesday, October 11, 2 pm
- **MAGIC FOR THE MUSEUM**  
Saturday, October 22, 7 pm  
Grand Opera House



S	M	T	W	TH	F	S
		1	2	3	4	5
6	7	8	9	10	11	12
13	14	15	16	17	18	19
20	21	22	23	24	25	26
27	28	29	30			

## NOVEMBER

- **FIRST FRIDAYS**  
Friday, November 4, 5 pm - 8 pm
- **ANNUAL ART AUCTION, GALA & RAFFLE**  
Hotel Julien Dubuque  
Friday, November 11, 6 pm
- **IN THE MIND'S EYE**  
Saturday, November 12, 10 am
- **BABY & ME TOURS**  
Tuesday, November 15 & 29, 9 am
- **YOUNG AT ART**  
Tuesday, November 15, 2 pm
- **PAINTINGS BY ZANE YORK**  
Friday, November 18
- **DIALOG HUMAN, THE DRAWINGS OF PRISCILLA STEELE AND THOMAS C. JACKSON**  
Saturday, November 19



S	M	T	W	TH	F	S
				1	2	3
4	5	6	7	8	9	10
11	12	13	14	15	16	17
18	19	20	21	22	23	24
25	26	27	28	29	30	31

## DECEMBER

- **FAMOUS DEAD ARTIST SERIES**  
Sunday, December 4, 1:30 pm
- **SECOND SATURDAYS**  
Saturday, December 10, 1 pm
- **BABY & ME TOURS**  
Tuesday, December 13, 9 am
- **YOUNG AT ART**  
Tuesday, December 13, 2 pm



### A CITY IN A GARDEN: ALFRED CALDWELL'S EAGLE POINT PARK DRAWINGS

OCTOBER 7, 2016

OPENING RECEPTION:  
FRIDAY, OCTOBER 7, 5-8  
PM

In 2009, DuMA acquired a set of architectural blueprints outlining the designs for many of the structures at Dubuque's Eagle Point Park. The blueprints were created by noted Chicago landscape architect Alfred Caldwell, whose vision entailed using native materials to create spaces that are harmonious with the landscape.

A number of the prints will be on view for the first time, following necessary conservation treatments performed by the renowned Chicago Conservation Center.

A City in a Garden is presented in conjunction with the inaugural Dubuque Heritage Festival, a two-day symposium organized by Heritage Works

For more information, visit [heritageworksdbq.com](http://heritageworksdbq.com).





DUBUQUE MUSEUM OF ART  
701 LOCUST ST.  
DUBUQUE, IA 52001

Non-Profit Org.  
U.S. Postage  
**PAID**  
Permit #137  
Dubuque, IA

AN AFFILIATE OF THE SMITHSONIAN INSTITUTION

**TIMELESS. TIMELY. ENGAGING.**  
SINCE 1874

**HOURS OF OPERATION**

M CLOSED  
T / W / TH / F TEN AM - FOUR PM  
S / S ONE PM - FOUR PM

**DAILY ADMISSION**

ADULTS \$6  
SENIORS \$5  
STUDENTS \$3

FREE THURSDAYS AND 18 & YOUNGER ALWAYS  
FREE, COURTESY OF



STAY UP TO DATE WITH THE MOST RECENT  
NEWS AND EVENTS BY FOLLOWING US ON  
DBQART.COM OR ON SOCIAL MEDIA.



**“NEED A FUN GIFT? LOOKING TO TREAT YOURSELF TO  
A UNIQUE TRINKET? THINK OF THE DUMA GIFT SHOP.  
MEMBERS SAVE 10% EVERY DAY. STOP IN SOON!”  
MARTHA FUERSTE, GIFT SHOP MANAGER**



[DBQART.COM](http://DBQART.COM)

