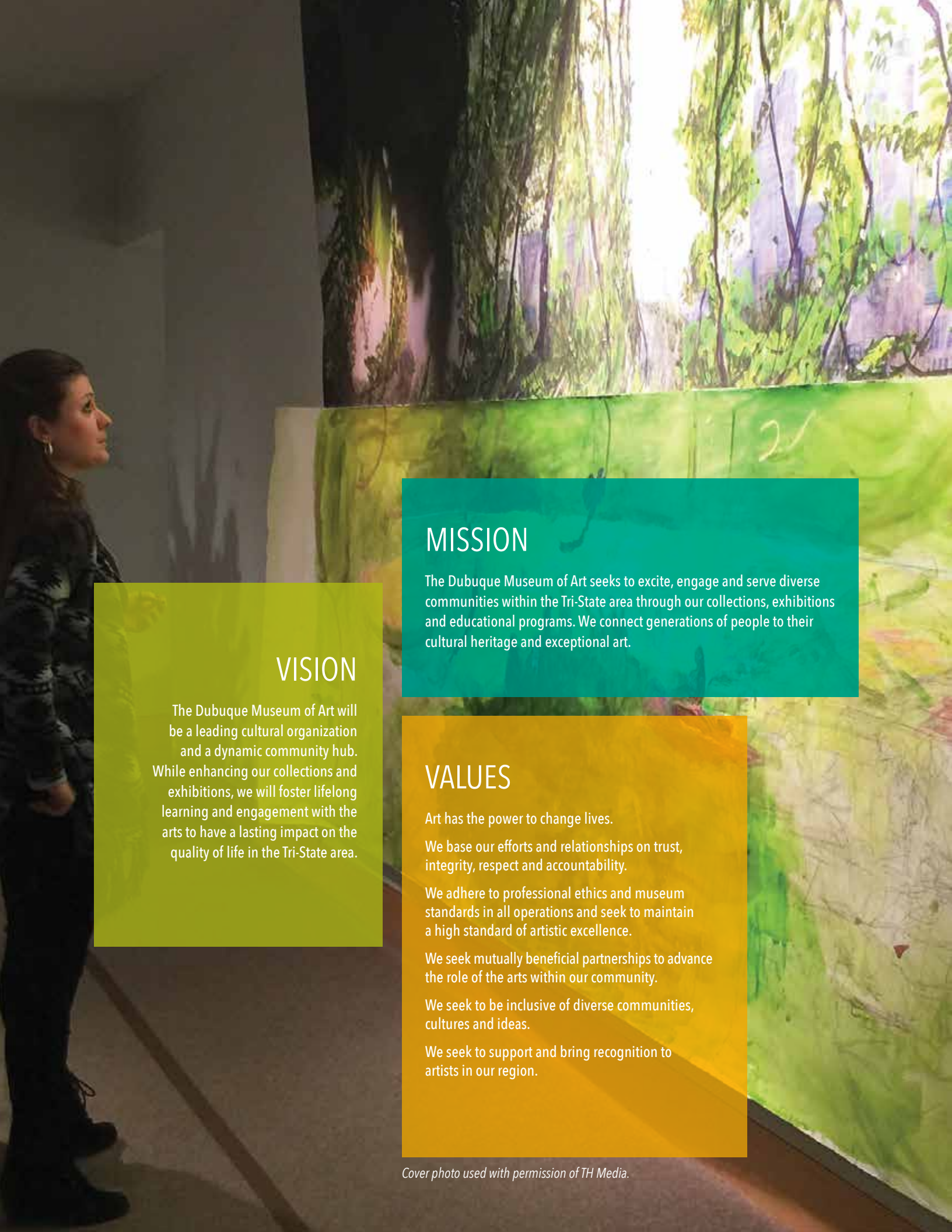

DuMA



2016-17

REPORT TO OUR
COMMUNITY AND
SUPPORTERS



VISION

The Dubuque Museum of Art will be a leading cultural organization and a dynamic community hub. While enhancing our collections and exhibitions, we will foster lifelong learning and engagement with the arts to have a lasting impact on the quality of life in the Tri-State area.

MISSION

The Dubuque Museum of Art seeks to excite, engage and serve diverse communities within the Tri-State area through our collections, exhibitions and educational programs. We connect generations of people to their cultural heritage and exceptional art.

VALUES

Art has the power to change lives.

We base our efforts and relationships on trust, integrity, respect and accountability.

We adhere to professional ethics and museum standards in all operations and seek to maintain a high standard of artistic excellence.

We seek mutually beneficial partnerships to advance the role of the arts within our community.

We seek to be inclusive of diverse communities, cultures and ideas.

We seek to support and bring recognition to artists in our region.

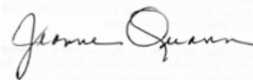
MESSAGE FROM THE BOARD

In the spring of 2016, the Dubuque Museum of Art engaged staff, board members, museum visitors and community leaders in a long-range planning process.

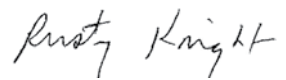
The enclosed report reflects the vision and priorities in our new strategic plan, as well as our accomplishments in those areas deemed of greatest importance for the Museum and the community.

One area of particular emphasis has been strengthening and deepening our engagement with the community. After reading this report, and from personal experience, we hope you'll agree that 2016-17 was a period of exciting change and growth in how the community embraces our Museum of Art, and vice versa.

In closing, we thank the many volunteers, members, sponsors, and funders whose generous contributions made this progress possible.



Jeanne Quann
President, 2015-17



Rusty Knight
President, 2017-19

RECOGNITION & ACCOMPLISHMENTS

- Received Dubuque Community School Board "Red Carpet Salute" in recognition of long-standing partnership and impact on student learning
- Awarded 365ink Community Impact Award for Non-Profit Excellence
- Invited to join the Smithsonian Institution Affiliations program, becoming the second Smithsonian Affiliate in Dubuque and only the third in Iowa
- Associate Curator and Registrar Stacy Peterson selected for Smithsonian Visiting Professionals Program Fellowship
- Statewide and national media coverage: Iowa Farm Bureau, Iowa Public Radio, Fine Art Connoisseur, National Endowment for the Humanities

GOING BEYOND OUR FOUR WALLS

Addressing a strategic goal to strengthen and deepen community engagement, DuMA extended its mission and increased its impact by building new bridges into the community.



15%

Increase in on- and off-site attendance between 2015-17

- DuMA presented three off-site exhibitions through a new partnership with Gallery C in Dubuque's Historic Millwork District:

Nuevo Arte Outsider De Cuba, a traveling exhibit organized by the National Alliance on Mental Illness, featured works by 14 contemporary Cuban artists, most of whom are self-taught and all of whom have dealt with significant mental health challenges.

Arts of Haiti included nearly two dozen artworks, made by leading Haitian artists, on loan from the Waterloo Center for the Arts (WCA). Dubuque was among four Iowa communities to host works from the WCA's Haitian art collections in connection with the 2017 Haitian Art Society Conference.

Boundary Object: Works by Fidencio Fifield-Perez examined the cultural and human dimensions of immigration through the paintings and installations of an emerging Iowa artist.

- Through a collaboration with the University of Dubuque (UD) and the Jeffrey B. Dodge Veterans Center, students in UD Professor Alan Garfield's museum studies course captured the stories and experiences of student veterans, which were presented in the exhibition *Making the Invisible Visible*.

UD students also curated and designed a catalog for Salvador Dali's *Twelve Signs of the Zodiac*, loaned from DuMA's permanent collections to the UD Bisignano Art Gallery.

CONNECTING ART TO LIFE

DuMA added to its social offerings and provided new ways to experience and engage with art and artists.



- With support from Sustainable Dubuque, DuMA partnered with Voices Productions and artist Gaia on a downtown mural depicting preservationist and botanist Ada Hayden, the first woman to earn a doctorate degree at Iowa State University.
- DuMA partnered with Heritage Works on ArchiTREK, a new series of walking tours and presentations highlighting local history and architecture.
- DuMA hosted a conversation on the state of race and policing, in collaboration with Humanities Iowa and the Legacies of Race & Ethnicity initiative.

- Through the monthly First Fridays series, the museum stays open late on the first Friday of every month and offers live music, food and drinks, and opportunities to interact with visiting artists. First Fridays was started in 2016 and has grown to include many other community arts venues.
- DuMA engaged hundreds of first-time visitors through its summer outdoor film series, Movies at the Museum, held in Washington Park.
- DuMA marked the 25th edition of the popular Famous Dead Artist series, with actor Gwen Werner performing as Frida Kahlo.

- DuMA's annual Dining Series engaged nearly 200 guests in 2017. Dining events were based around the collections and special exhibits.
- The 'In the Mind's Eye' program, launched in 2016, provides learning experiences for people living with early-stage dementia and their caregivers. Facilitated by trained museum docents and staff, the program uses works of art to spark discussion and foster a greater sense of connection.
- DuMA continued its partnership with NICC's Distinctively Dubuque program, annually hosting more than 100 newcomers to the community for a meal, museum tour, and discussion about the wide array of arts and cultural offerings in Dubuque.

BECOMING AN ESSENTIAL PARTNER IN EDUCATION

DuMA served thousands of youth and adult learners through a variety of new and expanded education programs, many carried out in collaboration with other nonprofits and service organizations.



- In partnership with St. Mark Youth Enrichment, DuMA twice hosted the Heroes Academy, an eight-week summer enrichment program focused on serving young people with social, emotional, and behavior needs. Program evaluations showed a marked increase in students' reading skills, visual literacy, and confidence.

- Through the Arts Trek tour program, nearly 1,000 2nd grade students received a tour of the exhibits and participated in a related art activity at the museum in 2016 and again in 2017. Through generous donors, DuMA provided for the cost of bus transportation and substitute teachers.
- DuMA hosted the annual K-8 Student Art Exhibit and biennial High School Student Art Exhibit, as well as professional development days for arts educators.

- Working with a committee of parents and local design-build firm Eikamp Arts, DuMA transformed a classroom on the museum's lower level with new seating, reading and play areas, and stations for hands-on arts activities.
- DuMA hosted hundreds of students through before and after-school arts programs, museum camps, workshops, and drop-in activities.
- Artist Ellen Wagener visited eight area high schools in October 2016, in conjunction with her exhibition at the museum.



“It is consistently clear that the museum staff take great pride in creating and delivering programs that are of the highest quality, are engaging for students and help expand students’ experience in the arts.”

- Stan Rheingans,
Superintendent of Schools
Dubuque Community Schools

- DuMA staff presented at the annual WaMaC Conference Art Day, hosted by Western Dubuque High School. Western Dubuque chose DuMA's current exhibit, *Shiny, Sticky Smooth: Pop Art and the Senses*, as the theme for the all-schools student art exhibit.
- DuMA served hundreds of students and adults, from schools, clubs, and care centers across our region, through before-school and group tours, including the Boys and Girl Scouts, St. Mark Youth Enrichment Early Risers program, Hillcrest, and many others.

ENHANCING OUR EXHIBITIONS

DuMA presented more than two dozen exhibitions and many more related programs, with an emphasis on recognizing artistic excellence and cultural diversity.

4

Exhibitions strategy focus areas:

Recognizing individual artistic excellence

Showcasing the heritage and culture of our region

Contributing to broader cultural dialogues

Bringing significant loans and traveling exhibitions to Dubuque



- Staged every two years, the *DuMA Biennial* showcases the quality and diversity of artists and contemporary art in our region. The 2017 *DuMA Biennial* was the most competitive edition yet, with guest juror Amanda Burden, associate curator at the Brandywine River Museum of Art, selecting 70 artworks from among more than 500 submissions. Entries were received from 208 artists in five states.
- DuMA presented nearly a dozen solo exhibitions in the McNamer Gallery, highlighting professional artists living and working in our region.
- *Shiny, Sticky, Smooth: Pop Art and the Senses* included more than 70 works by celebrated Pop artists, including Robert Rauschenberg, Roy Lichtenstein, Andy Warhol, and Jasper Johns. DuMA was the second museum to host this traveling exhibition, drawn from the collections of the Jordan Schnitzer Family Foundation.
- *The Artist Revealed: Two Centuries of Portraits from Cézanne to Dylan* highlighted the changing face of portraiture in American art and included more than 60 works from leading public and private collections, including the National Portrait Gallery.
- DuMA hosted the 'I'm a Dubuquer' exhibit, organized by Inclusive Dubuque.
- Through the series *Diverse Perspectives on American Art*, leading arts and humanities scholars delivered talks on subjects ranging from Regionalist art and music to the art and archaeology of the Southwest.
- Dubuque native and Worcester Art Museum Director Emeritus, Jim Welu, delivered two talks, including a standing-room only presentation at Loras College on the Monuments Men.

STEWARDING OUR HERITAGE

DuMA continues to add to the artistic and cultural record of our community by adding to and stewarding the permanent collections.



2,482

Works are currently in permanent collections

- DuMA accessioned more than 40 works of art into the permanent collections from leading regional artists including: Thomas Jackson, Diego Lasansky, Criss Glasell, Tim Olson, Carl Riter, and Joseph Walter.
- The traveling exhibition, *Edward S. Curtis: Mingled Visions*, traveled to cultural venues in Illinois and Michigan.
- *Remnants of the West: Edward S. Curtis and Mark James*, shown at DuMA in fall 2017, will be developed into a traveling exhibition and visit its first venue in 2019.
- With funding from the National Endowment for the Humanities, DuMA worked with the Midwest Art Conservation Center to conduct a general preservation assessment of its permanent collections. The assessment and report will allow DuMA to better preserve and enhance access to its collections, which are routinely used by college and university students and loaned to other cultural institutions.
- With funding from the State of Iowa and local donors, the Chicago Conservation Center completed conservation treatments on more than a dozen original architectural drawings for Dubuque's historic Eagle Point Park, which were created by park architect Alfred Caldwell and gifted to the Museum in 2009. Through donations to its Conservation Corner, DuMA also conserved works by Charles Thwaites and Adrian Dornbush.

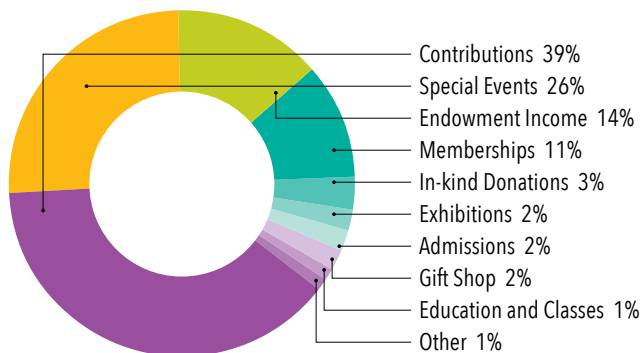
OPERATIONAL & FINANCIAL PERFORMANCE

Financial Summary

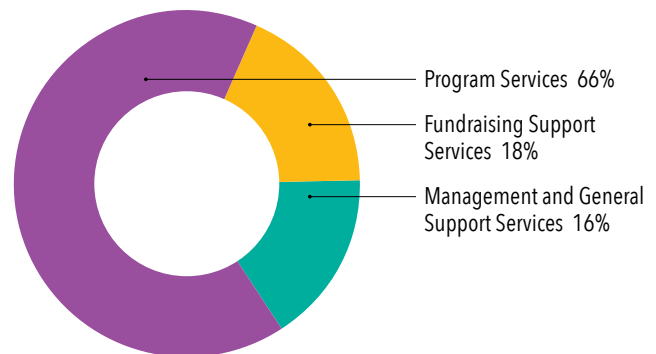
	2017	2016	2015
Total Support and Revenue*	\$ 397,127	\$ 397,126	\$ 342,520
Net Assets Released from Restrictions	183,638	143,983	73,995
Total Revenue	\$ 580,765	\$ 541,109	\$ 416,515
Total Expenses	\$ 632,823	\$ 553,402	\$ 488,695
Total Assets	\$ 3,515,513	\$ 3,332,500	\$ 3,290,152
Total Net Assets	\$ 3,228,578	\$ 3,158,611	\$ 3,104,810

*Excludes increases in temporarily or permanently restricted net assets from items such as restricted contributions and investment income on the endowment account.

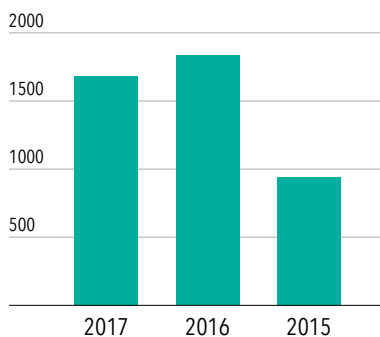
Revenue and Support



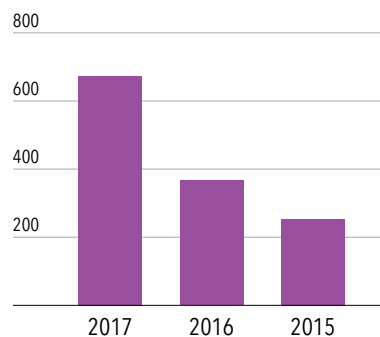
Expenses



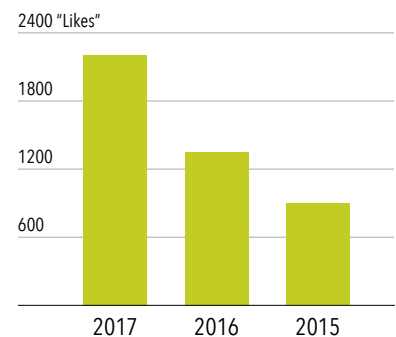
Special Events



Off Site & Traveling Exhibits



Social Media (Facebook)





11,016

Total served by traveling exhibits and off-site programs (FY16-17)



3,049
Youth impacted (FY17)

18,418

Total on-site attendance (FY16-17)



2016-2017 Report to Our Community and Supporters

Board of Trustees

OFFICERS

Rusty Knight
Sr. Joan Lingen, BVM
Tom Peckosh
Julie Steffen

DIRECTORS

Dr. Tom Benda, Jr.
Alan Bird
Andrew Butler
Tim Conlon
Dr. Paul DeLong
John B. Donovan
Emily Duehr
Chris Even
General Robert "Bob" Felderman
Dr. Randy Lengeling
Dr. Sudhir Koneru
Timothy Newlin
Janice Roerig-Blong
Jan Stoffel
Tonya Trumm
Chris Wand
Jack Wertzberger
Robert Wethal

EMERITUS

Jeanne Quann
Edwin Ritts, Jr.

STAFF

Amethyst Barron
Membership and
Visitor Services Associate
Margaret Buhr
Director of Education
Jean Hoeger
Director of Operations
Stacy Peterson
Associate Curator and Registrar
David Schmitz
Executive Director
Katherine Schroeder
Marketing and Events Manager
Erik Steffenson
Maintenance Specialist



DUBUQUE
museum
OF art

Dubuque Museum of Art • 701 Locust Street • Dubuque, Iowa • dbqart.com



Smithsonian Affiliate